



2020

Federal Employee Viewpoint Survey (FEVS)

The Federal Employee Viewpoint Survey (FEVS) is an annual survey administered by OPM that measures Federal Government employees' perceptions about their work experiences, organizations, and leaders. In 2020, OPM removed 34 of the 72 core questions to add questions related to the pandemic.

NIH Response Rate

68.0% (+1.6%)



Did You Know?



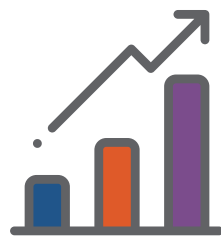
90%+ of your NIH colleagues...

- Know how their work relates to the agency's goals. (Q7)
- Agree NIH is successful at accomplishing its mission. (Q16)
- Feel they are protected from health and safety hazards on the job. (Q15)



Employee Engagement

82% (+4%)



ICs with the Largest Employee Engagement Increase

Large IC: **CC** 78% (+6%)
 Medium IC: **CIT** 71% (+8%)
 Small IC: **NINR** 79% (+9%)



ICs with the Highest 5 Year Average Employee Engagement

Large IC: **NIDDK** 88%
 Medium IC: **NHGRI** 86%
 Small IC: **NCCIH** 86%



Global Satisfaction

79% (+4%)



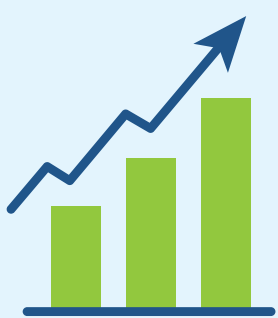
ICs with the Largest Global Satisfaction Increase

Large IC: **CC** 74% (+8%)
 Medium IC: **CIT** 65% (+8%)
 Small IC: **FIC** 85% (+15%)



ICs with the Highest 5 Year Average Global Satisfaction

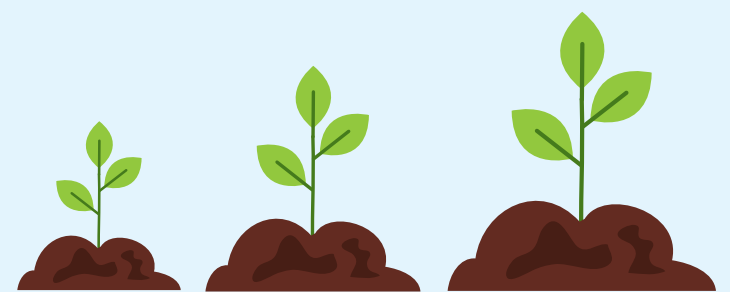
Large IC: **NIDDK** 88%
 Medium IC: **NHGRI** 86%
 Small IC: **NCCIH** 86%



Changes from 2019 - 2020

ALL

of the original questions from 2019 FEVS stayed the same or increased



Largest Increases from 2019 FEVS

- In my work unit, differences in performance are recognized in a meaningful way. (Q12) **62%** (+10%)
- Senior leaders demonstrate support for Work-Life programs. (Q32) **82%** (+9%)
- Employees are recognized for providing high quality products and services. (Q14) **78%** (+9%)



GREAT SCIENCE BEGINS WITH A GREAT WORKPLACE

<https://hr.nih.gov/fevs> | NIHFEVS@nih.gov

Office of Human Resources hr.nih.gov